



we serve
we listen

PINNACLE established
since 1996
TRAVEL

五洲旅行社

5 Days Taiwan Flying Cow Farm + Hot Spring

Day 1: Singapore – Tao Yuan

Assemble at the Airport for your departure flight to Taipei, Taiwan. Upon arrival at Tao Yuan C.K.S Airport, you will be welcomed and transferred to the hotel, then go to shopping circle around Tao Yuan station on your own.

Day 2: Tao Yuan – Taipei – Miaoli (B / D)

Today, you will have the opportunity to take the **Bullet Train** to Taipei after breakfast at the hotel. First processed to **National Taiwan Democracy Memorial Halls**, which is most impressive monument to the great Chinese Hero. The hall's enormous marble edifice towers over landscaped garden, graceful pavilions and placid ponds the bronze statue of late President Chiang Kai-Shek looks out over the city from the main building. Follow by the quaint little village of **Chiufen Village** (Jiufen), once the gold mining center of Taiwan. The gold is now gone, but Chiufen (Jiufen) was built of closely-packed houses clinging to steep mountainsides, continue to offer enchanting scenery, unique teahouses and fascinating glimpses into the lifestyles of the past. You will see the old fashioned way of lifestyle is still existing here with the aura of an old mining that still apparent, Chiufen radiates a variety of emotions. You may also try out some of its famous local dish like Taro and Sweet Potato Balls. Then continues journey to **Flying Cow Leisure Farm**, where you can admire a natural scenic landscape with its veteran farm. This public leisure ranch offers suites and cabins for lodging, and fresh dairy products are its specialties. Take a walk through the natural trails and organic garden, and visit ecological areas for milk cows, butterflies, water life and cute animals. The ranch was often selected as shooting location for wedding photos and dramas for its beautiful scenery.

Day 3: Miaoli – Taichung – Dong Pu (B / L / D)

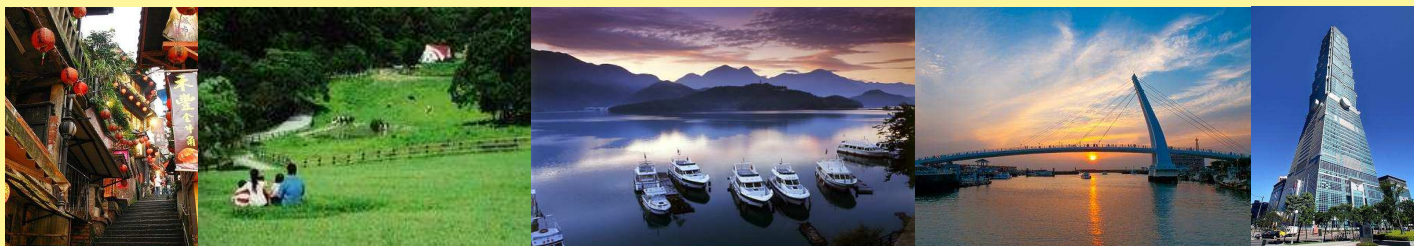
This morning you will first visit the **Wu Fong Earthquake Museum**, a unique educational opportunity available in Taiwan where you can find a lot of information about earthquake of 921. Its reminds people of the disaster happening on Sep. 21 of 1999, and allows people to foster a better understanding of earthquakes and increase awareness of our natural world. Follow by **Peacock Garden**, this park has over 200 peacocks and other rare and valuable birds and over 100 other species live in this park, including the mountain chicken, the Formosan blue magpie, the long-tailed pheasant, the golden pheasant, the amherst pheasant, and the black coot. Continue by **Wen Wu Temple**, which has palace style architecture in northern China that located on the bank of Sun Moon Lake, This temple enshrine and worship Confucius, Guan Gong and Yue Faye. Then proceed to **Tonpo Tilun Hot Spring** in Nantou, a big tour county in Taiwan, not only has rich recreational tour resources, but also has beautiful and comfortable scenery. Tonpo is famous for the groundwater (hot spring). Tourist can also relax here to enjoy the Indoor & outdoor SPA Hot Spring facilities in the resort. Unexplored forests, the unpolluted fresh air, clear creeks and the untouched wild animals also surround the resort. Tonight you can relax and discover the therapeutic remedies of natural spring water.

Day 4: Dong Pu – Taipei (B / L)

Today, you will head back to Taipei city after breakfast at the hotel. First visit the **Tamshui Old Street**, a place where the Tamsui River meets the Taiwan Strait and it more than a great place for fresh seafood. The town provides its nature beauty like keeling, which has a colorful history behind and has a wide variety of local snacks like the famous "Grama iron-eggs". Continue your journey and take a leisure stroll along **Fisherman's Wharf**, the filming site of the popular TV drama serial, "Meteor Garden" and enjoy the famous sunset view. Next, proceed to **National Palace Museum** which houses the world's largest collection of ancient Chinese treasures before heading to Pi Xiu Center. There are permanent displays of ceramics, bronzes, oracle bones, porcelain, paintings, calligraphy, enamelware, jade, Ching dynasty costume, carvings, and cabinets, as well as temporary exhibitions of other items. Then, visit **Taipei 101 Shopping Mall**, you can find many imported branding fashionable products at here. Taipei 101 represents local excellence in architecture, which is influential enough to alter a city's style and features. With a towering 508 meters height, Taipei 101 stands at the heart of the Xinyi Planning District near Taipei World Trade Center with a global ambition and mission to lead Taipei City in shining over the entire world. Next, visit Lingzhi Specialty, proceed to **Shihlin Night Market**, the largest night market in Taipei where you can find the latest fashion, accessories and indulge in a wide variety of local snacks. You will be transferred back to your hotel at the end of the tour.

Day 5: Taipei – Singapore (B)

After breakfast, you are free at leisure till your departure transfer to Tao Yuan C.K.S. International Airport.



Pinnacle Travel Services Pte Ltd
✉: 111 North Bridge Road, #02-15
Peninsula Plaza, Singapore 179098

☎ Tel : 6332 1522
☎ Fax : 6332 1577
🌐 www.pinnacle-travel.com