



PINNACLE TRAVEL

established
since 1996

we serve
we listen

五洲旅行社

* 7 DAYS 6 NIGHTS KOREA PRIVATE TOUR *

JEJU – MOUNT SEORAK – SEOUL

Day 1 Arrival in Jeju

(Lunch, Dinner)

Welcome to Jeju

Arrive at Jeju Airport, our friendly guide will meet you and welcome you to Jeju

Cheonjiyeon Water Fall

Proceed to Cheonjiyeon Water Fall, literally, the name Cheonjiyeon means sky (Ch'eon) connected with land (ji). It is one of the main tourist attractions on Jeju-do. Though water always falls in one particular area, depending on the amount of recent rain, the water may spread out. If you follow the farm road 600m to the southwest from Depo-dong, at the end of the pine tree forest is a cliff.



Jusangjeolli Cliff

At the base of this cliff is the Jisatgae Coast along with the imposing stone pillars. The Jusangjeolli are stone pillars piled up along the coast and is a designated cultural monument of Jeju Island. The Jusangjeolli was formed when the lava from Mt. Hallasan erupted into the sea of Jungmun

Camellia Hill

After the wonderful cliff, we will move to Camellia Hill. Camellia Hill is a camellia arboretum that was created on a 172,000 square meter plot of land in Sangchang-ri, Jeju-do. The arboretum is home to 6,000 camellia trees of 500 different species including species that are known to produce the world's largest and earliest blossoms.



In the evening, we will head to a local restaurant for Korean traditional dinner and transfer to hotel for check-in.

Day 2 Jeju

(Breakfast, Lunch, Dinner)

Seongsan Sunrise Peak

Visit to Seongsan Sunrise Peak, which is rose from under the sea in a volcanic eruption over 100,000 years ago. Located on the eastern end of Jeju Island, there is a huge crater at the top of Seongsan Ilchulbong Peak. The crater is about 600m in diameter and 90m high. While the southeast and north sides are cliffs, the northwest side is a verdant grassy hill that is connected to the Seongsan Village. The ridge provides an ideal spot for walks and for horse riding as well.

Optional Submarine Experience

On the way for lunch, we will drop by Submarine deck for the optional tour to enjoy under the ocean.

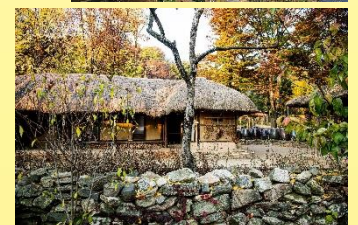
Seopjicoji (drama "All-in" location)

After lunch, Seopjicoji is the next visiting spot. Seopjicoji is located at the end of the eastern shore of Jeju-do Island. "Seopji" is the old name for the area, and "Koji" is Jeju dialect meaning a sudden bump on land. Green fields without a single tree spread beyond the cliff to where a rock called "seondol" protrudes. It is also famous for Korea Drama 'All-In' location.



Seongeup Folk Village

Located at the foot of Mt. Halla on Jeju Island, Seongeup Folk Village is a small town that holds a vast amount of culture. Cultural properties in the folk village have been handed down from generation to generation and include treasures such as residential houses, Confucian shrines and schools, ancient government offices, stone statues etc. Among the cultural gems of the folk village are intangible cultural assets such as folk plays, native foods, local folk craftsmanship, and local dialect.



Halla Botanical Garden

Last place is Halla Arboretum. Halla Arboretum was established for nature research and preservation. Located near Gwangioreum Volcanic Cone, there are many kinds of native trees and subtropical plants exhibited here. The arboretum serves as a wonderful training resource for students and experts alike.

Pinnacle Travel Services Pte Ltd
☒: 111 North Bridge Road, #02-15
Peninsula Plaza, Singapore 179098

☎ Tel : 6332 1522
☎ Fax : 6332 1577
🌐 www.pinnacle-travel.com



PINNACLE TRAVEL

established
since 1996

we serve
we listen

五洲旅行社

* 7 DAYS 6 NIGHTS KOREA PRIVATE TOUR *



Day 3 Jeju – Seoul – Mount Seorak

(Breakfast, Lunch, Dinner)

Domestic Flight to Seoul

This morning move to Jeju airport and fly to Seoul

Nami Island Tour (drama “Winter Sonata” location)

On arrival Gimpo airport, proceed to Nami Island where was formed as a result of the construction of the Cheongpyeong Dam. It is a half moon shaped (462,809 m²) isle, and on it is the grave of General Nami, who led a great victory against the rebels in the 13th year of the 7th king of the Joseon Dynasty, King Sejo (reign 1455 ~ 1468). Namiseom Island is 63 km away from Seoul in the direction of Chuncheon, and is famous for its beautiful tree lined roads. Since it is not far from Seoul, many couples and families come to visit.



Soyang Skywalk

Then we will proceed to Soyang River Skywalk, stretching over the river, is 174 m long and the transparent glass floor covers 156 m of the section. The end of the skywalk is equipped with a circular plaza and an observatory. Visitors can enjoy an open view of the area while taking a rest. Its night view with splendid lights is also well-known. End of tour, transfer to Gangwon about 2 hours from Chuncheon.



Day 4 Mount Seorak

(Breakfast, Lunch, Dinner)

Mt Seorak National Park

This whole day is dedicated to enjoy Mt. Seorak. Referred to as Seolsan and Seolbongsan, the mountain was named Seorak ('Seol' meaning 'snow' and 'Ak' meaning 'big mountain') because the snow would not melt for a long time keeping the rocks in a permanent state of white. This is Korea's most famous nature reserve, partially due to its proximity to Seoul but much due to its sheer beauty.

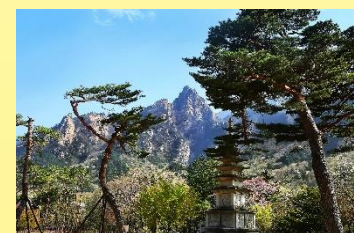


Gwongeumseong Fortress

Begin the visit with a cable car ride to Gwongeumseong Fortress. Take the ride back down, and choose one of the many trails crisscrossing the preserve. All these trails offer fantastic walks for everyone, from a light stroll to Byirong Waterfall, all the way to the rather demanding climb to Ulsanbawi Rock rising high above the park for a marvelous vista all the way to the ocean.

Shinheungsa Temple

Sinheungsa is a head temple of the Jogye Order of Korean Buddhism. The temple was re-constructed at the current location and renamed as “Sinheungsa,” meaning “the temple was blessed by God (sin) and became prosper (heung). It is situated on the slopes of the beautiful Seoraksan National Park Sokcho in Gangwon Province.



Sokcho Jungang Market

Late in the afternoon, we will visit a local market where enjoy a local life and traditional local restaurants. In the evening, return to hotel for rest.

Pinnacle Travel Services Pte Ltd
☒: 111 North Bridge Road, #02-15
Peninsula Plaza, Singapore 179098

☎ Tel : 6332 1522
☎ Fax : 6332 1577
🌐 www.pinnacle-travel.com



PINNACLE TRAVEL

established
since 1996

we serve
we listen

五洲旅行社

* 7 DAYS 6 NIGHTS KOREA PRIVATE TOUR *

Day 5 Mount Seorak – Seoul

(Breakfast, Lunch, Dinner)

N Seoul Tower and Love Locks

Upon arrival back in the Korean capital city, we will visit N Tower. N Tower opened to the public on October 15, 1980 and has since become a major tourist attraction. The 236.7m Seoul Tower sits atop Namsan Mountain (243m), Seoul Tower offers panoramic views of Seoul and the surrounding areas. The view is so stunning that many consider Seoul Tower the best tower in Asia.



Ginseng Showroom and Cosmetic Shop

Before visiting Bukcheon, we will drop by Korea's famous health product Ginseng Center and also one of the popular products cosmetic store and enjoy shopping.

Bukcheon Hanok Village

After short shopping time, take a walking tour through Bukcheon Village. Surrounded by Gyeongbokgung Palace, Changdeokgung Palace and Jongmyo Shrine, Bukchon Hanok Village is home to hundreds of traditional houses, called Hanok, that date back to the Joseon dynasty. Today, many of these Hanoks operate as cultural centers, guesthouses, restaurants and tea houses, providing visitors with an opportunity to experience, learn and immerse themselves in traditional Korean culture.



Optional Nanta Show

In the evening, Nanta performance is recommended as an optional show. Nanta has been running since October 1997 and is the most popular show ever in Korea. It also has achieved outstanding international success having performed on Broadway and toured widely around the US and the rest of the world. It receives rave reviews wherever it performs and quickly sells out.

Day 6 Seoul

(Breakfast, Lunch, Dinner)

Gyeongbok Palace

Begin the last day of this Korea tour. The first place is the most famous place 'Gyeongbok Palace'. Built in 1395, Gyeongbokgung Palace is commonly referred to as the Northern Palace because its location is furthest north when compared to the neighboring palaces of Changdeokgung (Eastern Palace) and Gyeonghuigung (Western Palace). Gyeongbokgung Palace is arguably the most beautiful, and remains the largest of all five palaces.



National Folk Museum

Located inside Gyeongbokgung Palace, the National Folk Museum of Korea presents historical artifacts that were used in the daily lives of Korean people in the past. Through the displays, visitors can learn about the domestic and agricultural lifestyles, as well as Korea's cultural beliefs.

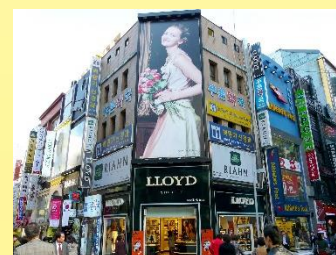
After enjoying morning visiting, we drive pass Presidential Blue House and drop by Amethyst factory and Oriental herb shop' Hoganbao and enjoy short shopping.

Kimchi Making Experience

In the afternoon, we will try to make a Kimchi making experience and try to wear a Korea traditional costume' Hanbok' taking a picture of yourself and remember this moment.

Myeong-dong Shopping Street

Last place is Myeongdong shopping street. It is the most famous shopping area and lots of tourists want to visit and feel a vivid time. Many brand name shops and department stores line the streets and alleys. Common products for sale include clothes, shoes, and accessories. Unlike Namdaemun or Dongdaemun, many designer brands are sold in Myeong-dong. In addition, several major department stores have branches here, including Lotte Department Store, Shinsegae Department Store, Myeong-dong Migliore, Noon Square and M Plaza. The department stores carry many premium labels and other fashionable goods at reasonable prices.



Day 7 Departure from Seoul

(Breakfast)

Free at own leisure till departure transfer to Incheon Airport for homebound flight.

Pinnacle Travel Services Pte Ltd
✉: 111 North Bridge Road, #02-15
Peninsula Plaza, Singapore 179098

☎ Tel : 6332 1522
☎ Fax : 6332 1577
🌐 www.pinnacle-travel.com